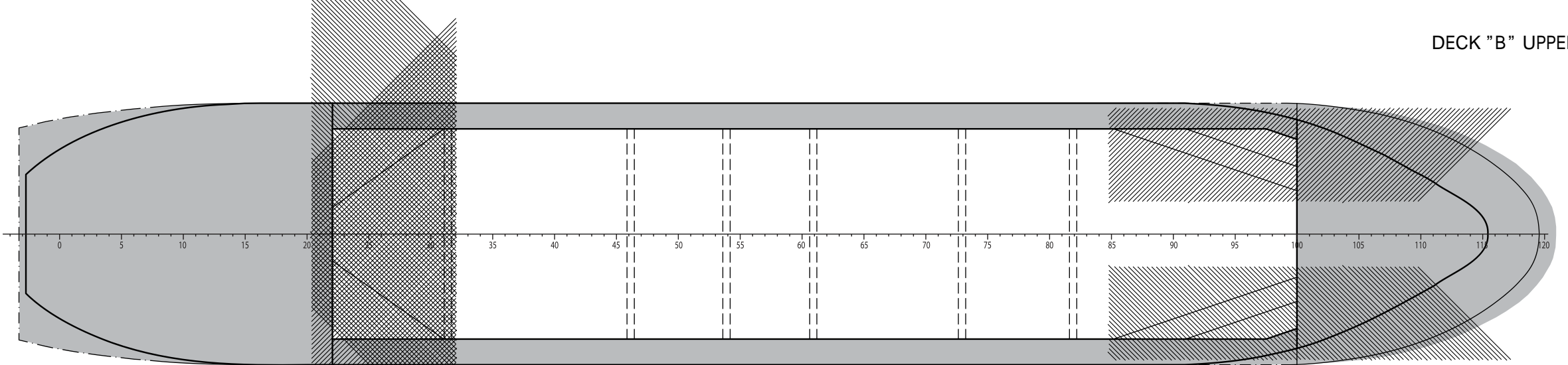
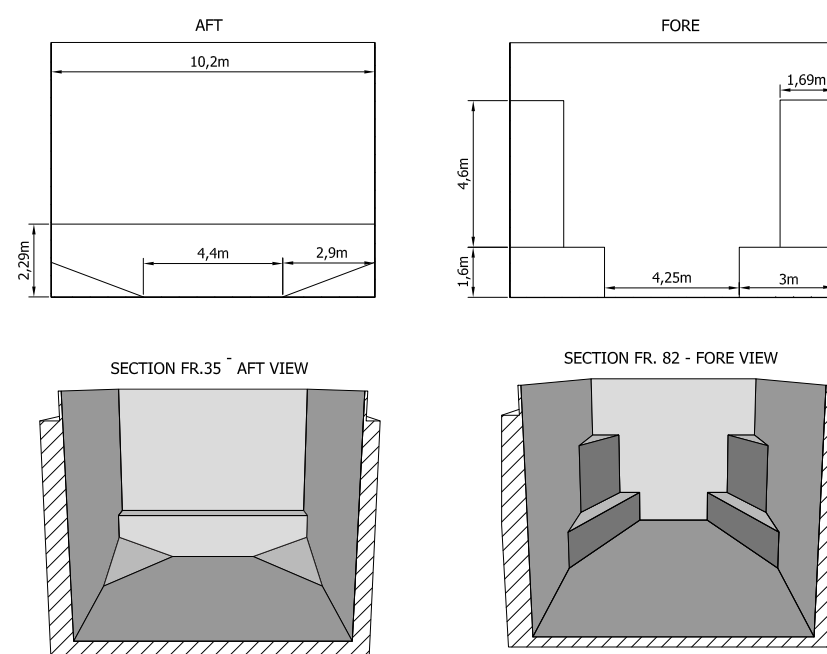
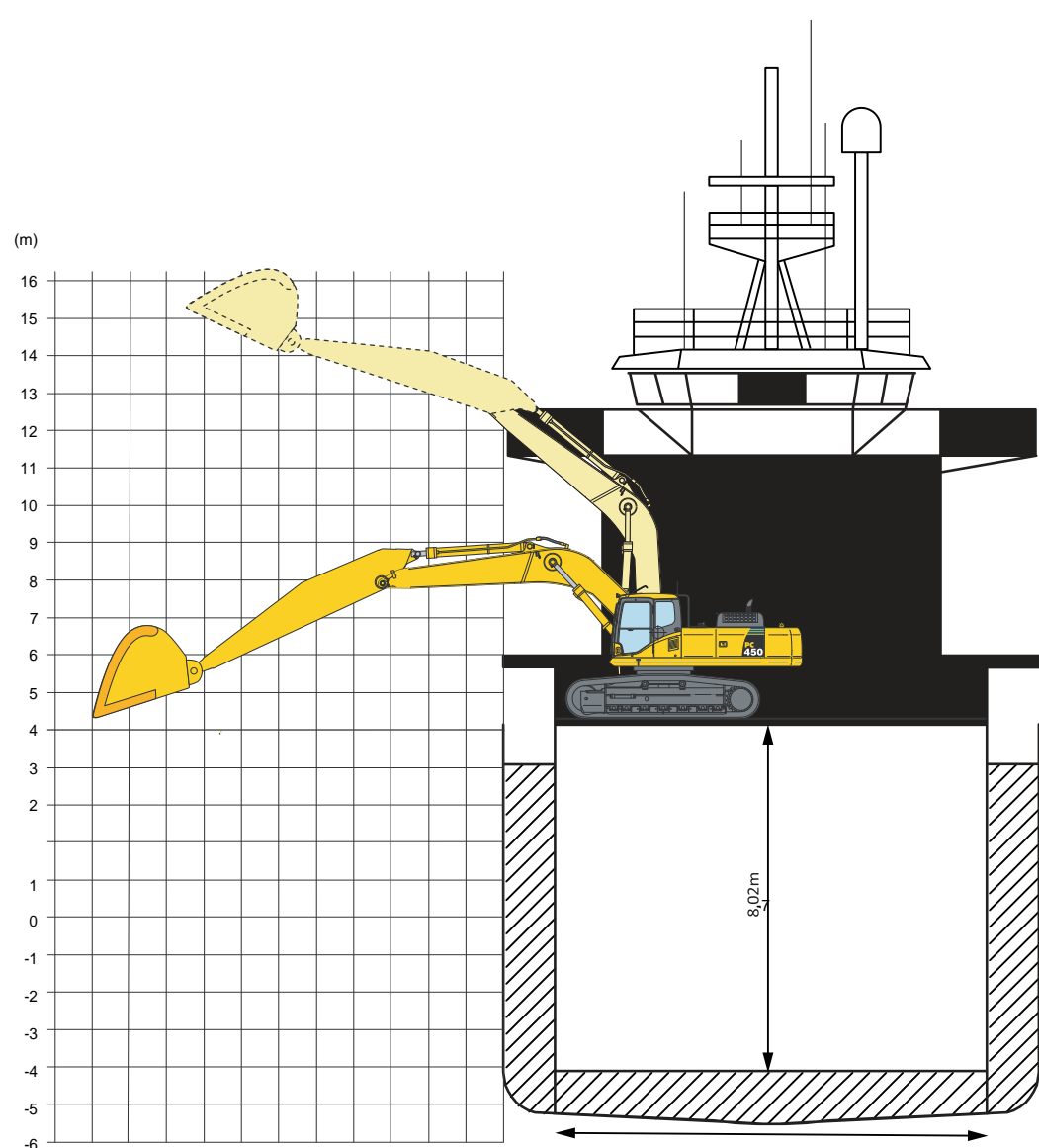
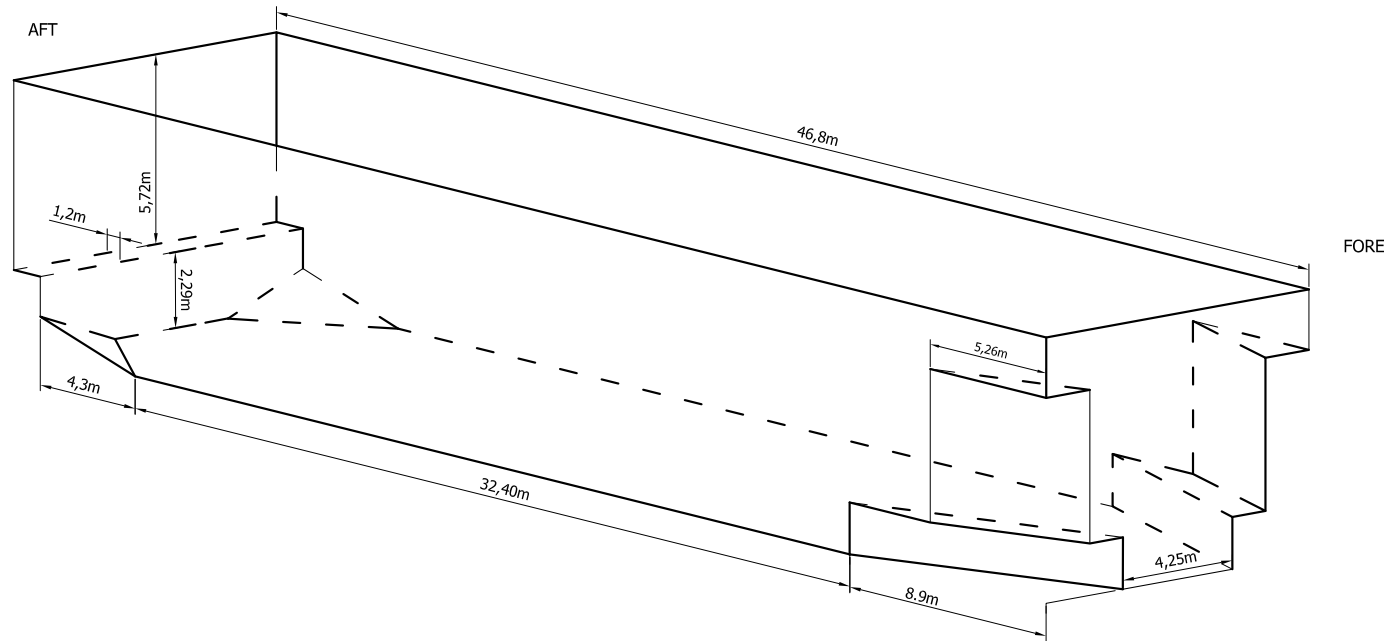


DECK "B" UPPER DECK



DECK "A" LOWER DECK

Particulars	
Length O.A	74,65 m
Breadth	12,70 m
BT	2030
NT	888
Hold	3746
Hold	132.271 cbf
Summer draft	6,02 m
Winter draft	5,89 m
Steel Tank Top	12 t/m <sup>2</sup>
Ballast draft min	3,40 m
Ballast draft max	4,20 m
Air draft loaded	26,00 m
Air draft Ballast	28,00 m
Ballast min waterline to hatch coaming	6,32 m
Loaded waterline to hatch coaming	3,60 m



Draft at 80 t. Oil, 30 t. Water		
DRAFT	DWTC	TCP t/cm
3,40	762	7,45
3,60	911	7,53
3,80	1063	7,61
4,00	1215	7,69
4,20	1371	7,77
4,40	1526	7,86
4,60	1684	7,92
4,80	1843	8,01
5,00	2003	8,09
5,20	2166	8,15
5,40	2330	8,21
5,60	2494	8,27
5,80	2661	8,33
6,00	2827	8,39
6,02	2844	8,39

Bulkheads thickness 30 cm

Capacity of the holds  
Depend on the bulkheads position